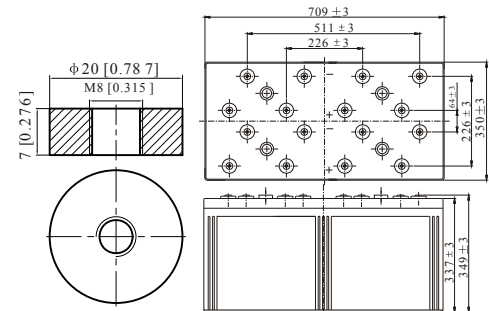


## Specification

Nominal Voltage	2V		
Nominal Capacity(10hrs rate)	3000.0AH		
Dimension	Length	709 ± 3mm(27.91 inches)	
	Width	350 ± 3mm(13.78 inches)	
	Container Height	337 ± 3mm(13.27 inches)	
	Total Height (with Terminal)	349 ± 3mm(13.74 inches)	
	Approx Weight	Approx 213.9Kg (471.6lbs)	
Design Float Life	20 years at 25°C(77°F)		
Container Material	ABS		
Rated Capacity	3210.0AH/160.5A	(20hr, 1.80V/cell, 25°C/77°F)	
	3000.0AH/300.0A	(10hr, 1.80V/cell, 25°C/77°F)	
	2610.0AH/522.0A	( 5hr, 1.75V/cell, 25°C/77°F)	
	2340.0AH/780.0A	( 3hr, 1.75V/cell, 25°C/77°F)	
	1860.0AH/1860.0A	( 1hr, 1.60V/cell, 25°C/77°F)	
Max. Discharge Current	24000A (5s)		
Internal Resistance	Approx 0.20mΩ		
Operating Temp.Range	Discharge :	-15~50°C (5~120°F)	
	Charge :	0~40°C (5~104°F)	
	Storage :	-15~40°C (5~104°F)	
Nominal Operating Temp. Range	25 ± 3°C (77 ± 5°F)		
Cycle Use	Initial Charging Current less than 900.0A.Voltage		
	2.4V~2.5V at 25°C(77°F)Temp. Coefficient -5mV/°C		
Standby Use	No limit on Initial Charging Current Voltage		
	2.25V~2.3V at 25°C(77°F)Temp. Coefficient -3mV/°C		
Capacity affected by Temperature	40°C (104°F)	103%	
	25°C ( 77°F)	100%	
	0°C ( 32°F)	86%	
Self Discharge	≤1.5% per month		
	RUZET TPA series batteries may be stored for up to 6 months at 25°C(77°F) and then a freshening charge is required.		



## Applications

- UPS and EPS
- Emergency light
- Railway signal and aircraft signal system
- Marine and power stations Alarm and security system
- Electronic apparatus and equipment
- Communication power supply, DC power supply

### Constant Current Discharge (Amperes) at 25°C (77°F)

F.V/Time	10 min	15 min	20 min	30 min	45 min	1h	2h	3h	4h	5h	6h	8h	10h	20h
1.85V/ce ll	3510.0	2952.0	2619.0	2172.0	1676.0	1434.0	928.5	698.1	571.9	481.1	421.5	338.2	290.7	155.1
1.80V/ce ll	\	3314.9	2895.6	2359.1	1808.0	1513.7	998.1	750.0	607.9	510.0	446.7	355.9	300.0	160.5
1.75V/ce ll	\	3736.1	3200.0	2563.5	1972.0	1650.0	1038.0	780.0	628.9	522.0	460.6	367.8	308.1	164.6
1.70V/ce ll	\	\	3532.2	2798.8	2124.0	1746.0	1093.5	821.0	657.0	552.0	482.7	383.3	319.9	168.8
1.65V/ce ll	\	\	3757.7	2953.6	2248.0	1806.0	1133.7	854.0	683.0	569.4	499.5	396.3	328.9	174.0
1.60V/ce ll	\	\	\	3151.6	2336.0	1860.0	1162.5	876.0	698.1	583.3	510.0	403.1	335.8	176.8

### Constant Power Discharge (Watts) at 25°C (77°F)

F.V/Time	10 min	15 min	20 min	30 min	45 min	1h	2h	3h	4h	5h	6h	8h	10h	20h
1.85V/ce ll	6553.9	5567.5	4989.2	4183.3	3255.1	2794.7	1821.7	1374.8	1129.6	952.9	837.1	674.5	581.1	310.4
1.80V/ce ll	\	6168.7	5435.9	4474.7	3484.4	2934.4	1945.3	1468.7	1194.3	1005.4	883.5	707.7	598.8	320.7
1.75V/ce ll	\	6868.1	5950.4	4822.8	3764.5	3184.2	2015.6	1521.5	1231.3	1025.5	908.3	729.7	614.1	328.4
1.70V/ce ll	\	\	6519.3	5236.6	4039.8	3358.8	2119.0	1598.5	1284.0	1082.7	950.4	759.7	637.3	336.6
1.65V/ce ll	\	\	6884.1	5481.2	4237.5	3449.5	2184.2	1655.6	1329.7	1113.1	980.5	783.4	654.1	346.6
1.60V/ce ll	\	\	\	5808.4	4380.0	3534.0	2229.0	1690.7	1355.0	1136.3	998.1	795.4	666.7	351.7