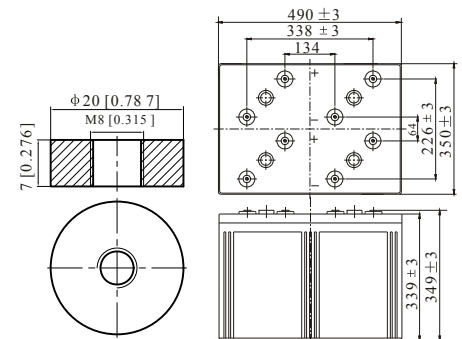


Specification

Nominal Voltage	2V	
Nominal Capacity(10hrs rate)	2000.0AH	
Dimension	Length	490 ± 3mm(19.29 inches)
	Width	350 ± 3mm(13.78 inches)
	Container Height	339 ± 3mm(13.35 inches)
	Total Height (with Terminal)	349 ± 3mm(13.74 inches)
Approx Weight	Approx 143.0Kg (315.3lbs)	
Design Float Life	20 years at 25°C(77°F)	
Container Material	ABS	
Rated Capacity	2140.0AH/107.0A	(20hr, 1.80V/cell, 25°C/77°F)
	2000.0AH/200.0A	(10hr, 1.80V/cell, 25°C/77°F)
	1740.0AH/348.0A	(5hr, 1.75V/cell, 25°C/77°F)
	1560.0AH/520.0A	(3hr, 1.75V/cell, 25°C/77°F)
	1240.0AH/1240.0A	(1hr, 1.60V/cell, 25°C/77°F)
Max. Discharge Current	16000A (5s)	
Internal Resistance	Approx 0.28mΩ	
Operating Temp. Range	Discharge :	-15~50°C (5~120°F)
	Charge :	0~40°C (5~104°F)
	Storage :	-15~40°C (5~104°F)
Nominal Operating Temp. Range	25 ± 3°C (77 ± 5°F)	
Cycle Use	Initial Charging Current less than 600.0A. Voltage 2.4V~2.5V at 25°C(77°F)Temp. Coefficient -5mV/°C	
	Standby Use No limit on Initial Charging Current Voltage 2.25V~2.3V at 25°C(77°F)Temp. Coefficient -3mV/°C	
Capacity affected by Temperature	40°C (104°F)	103%
	25°C (77°F)	100%
	0°C (32°F)	86%
Self Discharge	≤1.5% per month	
	RUZET TPA series batteries may be stored for up to 6 months at 25°C(77°F) and then a freshening charge is required.	



Applications

- UPS and EPS
- Emergency light
- Railway signal and aircraft signal system
- Marine and power stations Alarm and security system
- Electronic apparatus and equipment
- Communication power supply, DC power supply

Constant Current Discharge (Amperes) at 25°C (77°F)

F.V/Time	10 min	15 min	20 min	30 min	45 min	1h	2h	3h	4h	5h	6h	8h	10h	20h
1.85V/cell	2340.0	1968.0	1746.0	1448.0	1117.3	956.0	619.0	465.4	381.3	320.8	281.0	225.5	193.8	103.4
1.80V/cell	2677.5	2209.9	1930.4	1572.7	1205.3	1009.1	665.4	500.0	405.3	340.0	297.8	237.3	200.0	107.0
1.75V/cell	3041.1	2490.7	2133.3	1709.0	1314.7	1100.0	692.0	520.0	419.3	348.0	307.1	245.2	205.4	109.7
1.70V/cell	3434.6	2763.4	2354.8	1865.9	1416.0	1164.0	729.0	547.3	438.0	368.0	321.8	255.5	213.3	112.5
1.65V/cell	3688.4	2958.7	2505.1	1969.0	1498.7	1204.0	755.8	569.3	455.3	379.6	333.0	264.2	219.2	116.0
1.60V/cell	\	3240.5	2721.4	2101.1	1557.3	1240.0	775.0	584.0	465.4	388.8	340.0	268.8	223.8	117.9

Constant Power Discharge (Watts) at 25°C (77°F)

F.V/Time	10 min	15 min	20 min	30 min	45 min	1h	2h	3h	4h	5h	6h	8h	10h	20h
1.85V/cell	4369.2	3711.6	3326.1	2788.8	2170.1	1863.1	1214.5	916.5	753.1	635.3	558.1	449.7	387.4	206.9
1.80V/cell	4941.3	4112.5	3623.9	2983.2	2322.9	1956.3	1296.9	979.1	796.2	670.2	589.0	471.8	399.2	213.8
1.75V/cell	5523.2	4578.7	3966.9	3215.2	2509.7	2122.8	1343.7	1014.3	820.9	683.7	605.5	486.5	409.4	218.9
1.70V/cell	6098.1	5010.0	4346.2	3491.1	2693.2	2239.2	1412.7	1065.7	856.0	721.8	633.6	506.5	424.9	224.4
1.65V/cell	6489.3	5323.3	4589.4	3654.2	2825.0	2299.6	1456.1	1103.8	886.5	742.0	653.7	522.3	436.1	231.1
1.60V/cell	\	5735.1	4932.0	3872.3	2920.0	2356.0	1486.0	1127.1	903.3	757.5	665.4	530.2	444.5	234.5